

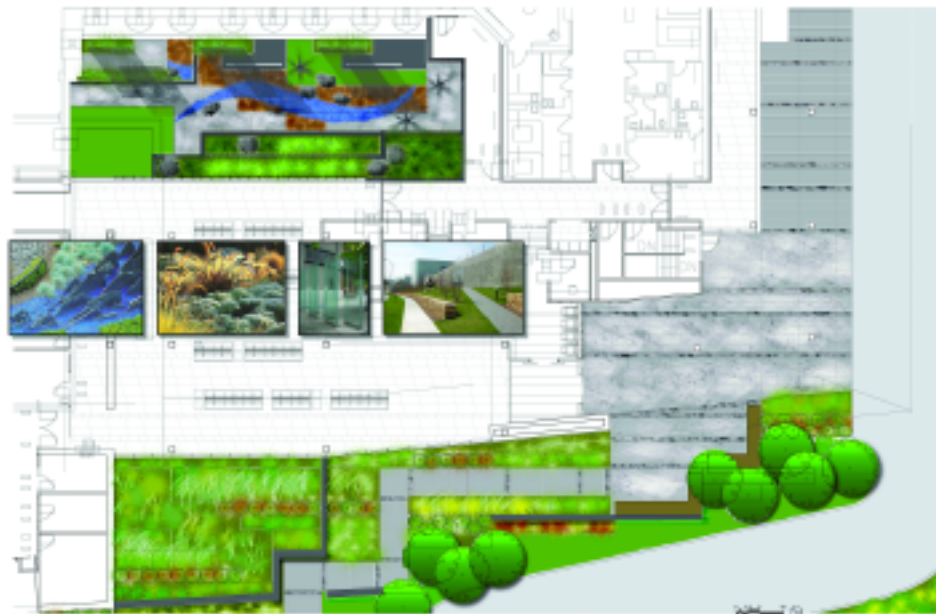


Catholic Health, Mercy Hospital of Buffalo Hospital Entry and Healing Garden Court

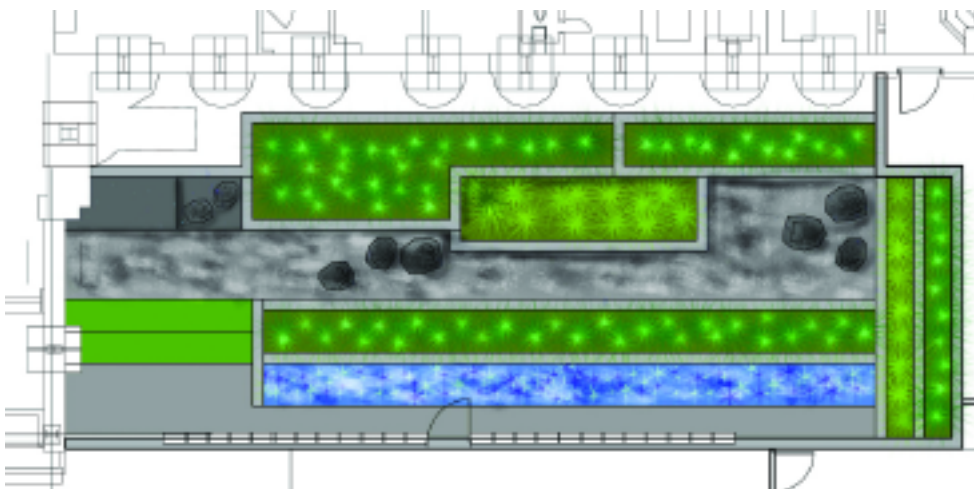
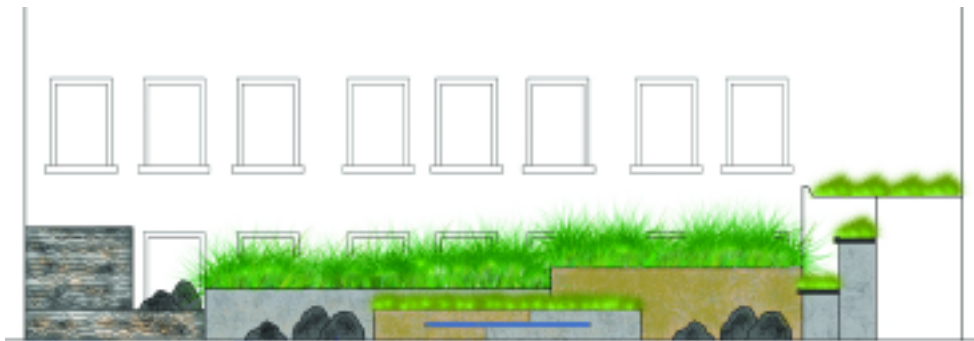
Buffalo, NY

Decorative stone walls that compliment the new building materials are used to balance severe elevation changes and to create a unique experience for the user. The walls allow the development of a garden at the highest point of the entry that provides the interior waiting area with a viewing garden and a visual screen from passers by. The area uses natural stone pavers, wood benches, various lighting elements and native plantings to provide long lines of textures with a variety of seasonal interest.

The healing garden court allows users a “visual break” from the traumatic events that surround an emergency room. The natural daylight in the courtyard is limited, dictating the types and locations for all the plants in this visual garden, making textures extremely important. A simple “stream” is created by alluding to the idea of water through the use of tumbled glass chips in various shades of blue, with lighting from below. Likewise the illusion of a perfect lawn visually invites you to step down into the courtyard for a moment of calm. Large boulders are set in a sea of pebbles, invoking a traditional Japanese garden. The affect is a calming, tranquil garden for the eyes.



Smaller gardens and private areas for family and friends waiting at the emergency room are pulled off the sloping walk between the walls



Textures are important for this viewing garden and include a large slab of patterned stone, a smooth “lawn,” and tumbled blue glass chips that allude to the tranquility of water.